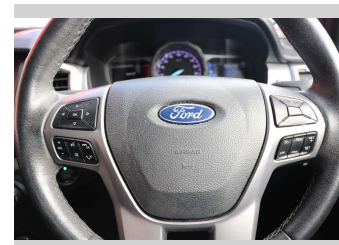
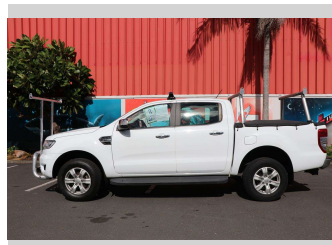
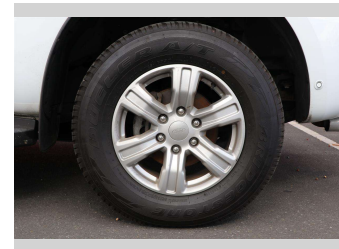
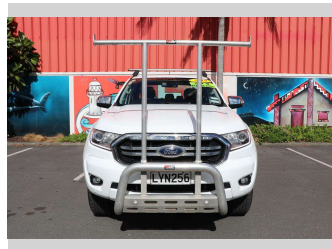
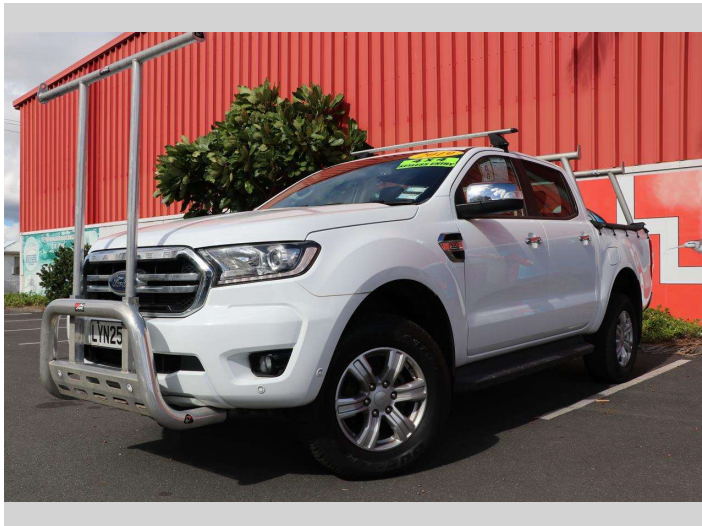



2019 Ford Ranger XLT DOUBLE CAB W/SA




Purchase Price **\$41,990**
Includes GST, Registration & Licensing

Finance may be available on this vehicle. Ask one of our friendly staff for more information.



Gain peace of mind with Mechanical Breakdown Insurance. **Ask us how.**



Top features

None Listed

Body Style
4 door, Ute

Odometer
97,658 km

Engine
3198 cc, Electronic Fuel


Fuel Type
Diesel

Transmission
CVT

Wheels
-

VIN
MPBUMFF50JX182212

Interior
-

Safety

Based on 2023 VSRR rating

Reg No.
LYN256

Ext Colour
White

History
NZ New

Seats
5 seats

CO2 Emissions
★ ★ ☆ ☆ ☆ ☆
262 grams/km

Energy Economy
★ ☆ ☆ ☆ ☆ ☆
Annual fuel cost of \$3,840
9.9L per 100km

Cost per year is an estimate based on diesel price of \$2.00 per litre and an average distance of 14000 km. Includes Road User Charges (RUC). Emissions and Energy Economy figures standardised to 3P WLTP.

Stock ID: 1505581